

ENGLISH

- 1 Display
- 2 Vol +
- 3 Echo -
- 4 Echo +
- 5 On/off connection button
- 6 Vol -
- 7 Charging port
- 8 Mode LED light
- 9 On/off connection button
- 10 Jack 3.5mm
- 11 Jack 3.5mm to 6.3mm adapter

MAIN CHARACTERISTICS

- Polar pattern: Cardioid
- Rapporto segnale/rumore: >86 dB
- Frequency response: 15Hz-12kHz
- Wireless transmission distance: Up to 15m
- Built-in battery: Li-ion 3.7V, 1500mAh
- Playtime: Up to 30 hours
- Charging time: Approx. 2 hours
- Input power: 5V, 650mA
- Operating frequency: 2402-2480MHz
- RF max output power: _____
- Dimensions: Ø48x210mm
- Weight: 210g
- For receiver**
- Built-in battery: 3.7V, 650mAh
- Playtime: Up to 15 hours
- Charging time: Approx. 2 hours
- Input power: 5V, 500mA
- Dimensions: 65,5x13,4x7,8mm
- Weight: 25g

FRAANÇAIS

- 1 Affichage
- 2 Vol +
- 3 Eco -
- 4 Echo +
- 5 Bouton on/off de connexion
- 6 Vol -
- 7 Port de charge
- 8 T6mo LED de mode
- 9 Bouton on/off de connexion
- 10 Jack 3,5 mm
- 11 Adaptateur jack 3,5 mm vers 6,3 mm

CARACTÉRISTIQUES PRINCIPALES

- Directivité: Cardioidie
- Rapport signal/bruit: >86 dB
- Réponse en fréquence: 15 Hz-12 kHz
- Distance de transmission sans fil: Jusqu'à 15 m
- Batterie intégrée: Li-ion 3,7 V, 1500 mAh
- Autonomie: Jusqu'à 30 heures
- Temps de charge: Environ 2 heures
- Puissance d'entrée: 5 V, 650 mA
- Fréquence de fonctionnement: 2402-2480 MHz
- Puissance de sortie RF max: _____
- Dimensions: Ø48x210 mm
- Poids: 210 g
- Pour récepteur**
- Batterie intégrée: 3,7 V, 650 mAh
- Autonomie: Jusqu'à 15 heures
- Temps de charge: Environ 2 heures
- Puissance d'entrée: 5 V, 500 mA
- Dimensions: 65,5x13,4x7,8 mm
- Poids: 25 g

ESPAÑOL

- 1 Pantalla
- 2 Vol +
- 3 Eco -
- 4 Echo +
- 5 Bot6n de conexi6n encendido/apagado
- 6 Vol -
- 7 Puerto de carga
- 8 Luz LED de modo
- 9 Bot6n de conexi6n encendido/apagado
- 10 Jack de 3,5 mm
- 11 Adaptador de jack de 3,5 mm a 6,3 mm

CARACTERÍSTICAS PRINCIPALES

- Patr6n polar: Cardioida
- SNR: >86 dB
- Respuesta de frecuencia: 15 Hz-12 kHz
- Distancia de transmisi6n inalámbrica: Hasta 15 m
- Batería integrada: Li-ion 3,7 V, 1500 mAh
- Tiempo de reproducci6n: Hasta 30 horas
- Tiempo de carga: Aproximadamente 2 horas
- Potencia de entrada: 5 V, 650 mA
- Frecuencia de funcionamiento: 2402-2480 MHz
- Potencia de salida RF m6x: _____
- Dimensiones: Ø48x210 mm
- Peso: 210 g
- Para receptor**
- Batería integrada: 3,7 V, 650 mAh
- Tiempo de reproducci6n: Hasta 15 horas
- Tiempo de carga: Aproximadamente 2 horas
- Potencia de entrada: 5 V, 500 mA
- Dimensiones: 65,5x13,4x7,8 mm
- Peso: 25 g

DEUTSCH

- 1 Anzeige
- 2 Vol +
- 3 Echo -
- 4 Echo +
- 5 Ein-/Aus-Taste Verbindung
- 6 Vol -
- 7 Ladeanschluss
- 8 Modus-LED-Anzeige
- 9 Ein-/Aus-Taste Verbindung
- 10 3,5-mm-Klinkestecker
- 11 Adapter von 3,5 mm auf 6,3 mm

HAUPTMERKMALE

- Richtcharakteristik: Niere
- SNR: >86 dB
- Frequenzgang: 15 Hz-12 kHz
- Drahtlose 6bertragungsreichweite: Bis zu 15 m
- Eingebaute Batterie: Li-ion 3,7 V, 1500 mAh
- Spielzeit: Bis zu 30 Stunden
- Ladezeit: Ca. 2 Stunden
- Eingangsleistung: 5 V, 650 mA
- Betriebsfrequenz: 2402-2480 MHz
- Maximale RF-Ausgangsleistung: _____
- Abmessungen: Ø48x210 mm
- Gewicht: 210 g
- F6r Empf6nger**
- Eingebaute Batterie: 3,7 V, 650 mA
- Spielzeit: Bis zu 15 Stunden
- Ladezeit: Ca. 2 Stunden
- Eingangsleistung: 5 V, 500 mA
- Abmessungen: 65,5x13,4x7,8 mm
- Gewicht: 25 g

ITALIANO

- 1 Display
- 2 Vol +
- 3 Echo -
- 4 Echo +
- 5 Pulsante on/off connessione
- 6 Vol -
- 7 Porta di ricarica
- 8 Indicatore LED modalit6
- 9 Pulsante on/off connessione
- 10 Jack da 3,5 mm
- 11 Adattatore da jack 3,5 mm a 6,3 mm

CARATTERISTICHE PRINCIPALI

- Diagramma polare: Cardioido
- Rapporto segnale/rumore: >86 dB
- Risposta in frequenza: 15 Hz-12 kHz
- Distanza di trasmissione wireless: Fino a 15 m
- Batteria integrata: Li-ion 3,7 V, 1500 mAh
- Autonomia: Fino a 30 ore
- Tempo di ricarica: Circa 2 ore
- Alimentazione in ingresso: 5 V, 650 mA
- Frequenza operativa: 2402-2480 MHz
- Potenza massima RF in uscita: _____
- Dimensioni: Ø48x210 mm
- Peso: 210 g
- Per ricevitore**
- Batteria integrata: 3,7 V, 650 mAh
- Autonomia: Fino a 15 ore
- Tempo di ricarica: Circa 2 ore
- Alimentazione in ingresso: 5 V, 500 mA
- Dimensioni: 65,5x13,4x7,8 mm
- Peso: 25 g

PORTUGUÊS

- 1 Tela
- 2 Vol +
- 3 Eco -
- 4 Echo +
- 5 Bot6o de conex6o on/off
- 6 Vol -
- 7 Porta de carregamento
- 8 Luz LED de modo
- 9 Bot6o de conex6o on/off
- 10 Jack 3,5 mm
- 11 Adaptador de jack 3,5 mm para 6,3 mm

PRINCIPAIS CARACTERÍSTICAS

- Padr6o polar: Cardioida
- Rapporto sinal/ruído: >86 dB
- Resposta de frequêcia: 15 Hz-12 kHz
- Dist6ncia de transmiss6o sem fio: At6 15 m
- Bateria embutida: Li-ion 3,7 V, 1500 mAh
- Tempo de reproduç6o: At6 30 horas
- Tempo de carregamento: Aproximadamente 2 horas
- Entrada de energia: 5 V, 650 mA
- Frequêcia de operaç6o: 2402-2480 MHz
- Potêcia de saída RF m6x: _____
- Dimens6es: Ø48x210 mm
- Peso: 210 g
- Para receptor**
- Bateria embutida: 3,7 V, 650 mAh
- Tempo de reproduç6o: At6 15 horas
- Tempo de carregamento: Aproximadamente 2 horas
- Entrada de energia: 5 V, 500 mA
- Dimens6es: 65,5x13,4x7,8 mm
- Peso: 25 g

POLSKI

- 1 Wyświetlacz
- 2 Vol +
- 3 Eco -
- 4 Echo +
- 5 Przycisk połączenia on/off
- 6 Vol -
- 7 Port ładowania
- 8 Diody LED trybu
- 9 Przycisk połączenia on/off
- 10 Gniazdo 3,5 mm
- 11 Adapter z gniazda 3,5 mm na 6,3 mm

GL6WNE CECZY

- Charakterystyka kierunkowa: Kardioidalna
- SNR: >86 dB
- Pasmo przenośności: 15 Hz-12 kHz
- Dystans transmisji bezprzewodowej: Do 15 m
- Budowana bateria: Li-ion 3,7 V, 1500 mAh
- Czas pracy: Do 30 godzin
- Czas ładowania: Około 2 godziny
- Moc wejściowa: 5 V, 650 mA
- Częstotliwość pracy: 2402-2480 MHz
- Maksymalna moc wyjściowa RF: _____
- Wymiary: Ø48x210 mm
- Waga: 210 g
- Dla odbiornika**
- Budowana bateria: 3,7 V, 650 mAh
- Czas pracy: Do 15 godzin
- Czas ładowania: Około 2 godziny
- Moc wejściowa: 5 V, 500 mA
- Wymiary: 65,5x13,4x7,8 mm
- Waga: 25 g

NEDERLANDS

- 1 Display
- 2 Vol +
- 3 Echo -
- 4 Echo +
- 5 Aan/uit-knop voor verbinding
- 6 Vol -
- 7 Oplaadpoort
- 8 Modus-LED-Licht
- 9 Aan/uit-knop voor verbinding
- 10 Jack 3,5 mm
- 11 Adapter van jack 3,5 mm naar 6,3 mm

BELANGRIJKSTE KENMERKEN

- Voor microfoon
- Richtingspatroon: Cardioidie
- SNR: >86 dB
- Frequentierespons: 15 Hz-12 kHz
- Draadloze transmissieafstand: Tot 15 m
- Ingebouwde batterij: Li-ion 3,7 V, 1500 mAh
- Speeltijd: Tot 30 uur
- Opladetiijd: Ongeveer 2 uur
- Ingangsvermogen: 5 V, 650 mA
- Bedrijfsfrequentie: 2402-2480 MHz
- Maximaal RF-uitgangsvermogen: _____
- Afmetingen: Ø48x210 mm
- Gewicht: 210 g
- Voor ontvanger**
- Ingebouwde batterij: 3,7 V, 650 mAh
- Speeltijd: Tot 15 uur
- Opladetiijd: Ongeveer 2 uur
- Ingangsvermogen: 5 V, 500 mA
- Afmetingen: 65,5x13,4x7,8 mm
- Gewicht: 25 g

ČEŠTINA

- 1 Display
- 2 Vol +
- 3 Echo -
- 4 Echo +
- 5 Tlačítko připojení on/off
- 6 Vol -
- 7 Nabíjecí port
- 8 Kontrolka LED režimu
- 9 Tlačítko připojení on/off
- 10 Konektor 3,5 mm
- 11 Adaptér z konektoru 3,5 mm na 6,3 mm

HLAVNÍ CHARAKTERISTIKY

- Směrová charakteristika: Kardioida
- SNR: >86 dB
- Frekvenční odezva: 15 Hz-12 kHz
- Dosah bezdrátového přenosu: Až 15 m
- Vestavěná baterie: Li-ion 3,7 V, 1500 mAh
- Doba provozu: Až 30 hodin
- Doba nabíjení: Přibližně 2 hodiny
- Vstupní výkon: 5 V, 650 mA
- Driftfrekvence: 2402-2480 MHz
- Maximální výkon RF: _____
- Rozměry: Ø48x210 mm
- Hmotnost: 210 g
- Pro přijímač**
- Vestavěná baterie: 3,7 V, 650 mAh
- Doba provozu: Až 15 hodin
- Doba nabíjení: Přibližně 2 hodiny
- Vstupní výkon: 5 V, 500 mA
- Rozměry: 65,5x13,4x7,8 mm
- Hmotnost: 25 g

MAGYAR

- 1 Kijelző
- 2 Vol +
- 3 Echo -
- 4 Echo +
- 5 On/off-éyhdistőgomb
- 6 Vol -
- 7 Töltőport
- 8 Mód LED fény
- 9 Be-/kikapcsoló csatlakozás gomb
- 10 3,5 mm-es csatlakozó
- 11 3,5 mm-es csatlakozó 6,3 mm-es adapterrel

FŐ JELLEMZŐK

- Iránykarakterisztika: Kardioid
- Jel-zaj viszony (SNR): >86 dB
- Frekvenciaválet: 15 Hz-12 kHz
- Vezetéki nélküli hatótáv: Akár 15 m
- Beépített akkumulátor: Li-ion 3,7 V, 1500 mAh
- Lejátszási idő: Akár 30 óra
- Töltési idő: Kb. 2 óra
- Bemeneti teljesítmény: 5 V, 650 mA
- Kijelzőfrekvencia: 2402-2480 MHz
- Maximális RF kimenő teljesítmény: _____
- Méret: Ø48x210 mm
- Tömeg: 210 g
- Vevőhöz**
- Beépített akkumulátor: 3,7 V, 650 mAh
- Lejátszási idő: Akár 15 óra
- Töltési idő: Kb. 2 óra
- Bemeneti teljesítmény: 5 V, 500 mA
- Méret: 65,5x13,4x7,8 mm
- Tömeg: 25 g

SLOVENŠČINA

- 1 Zaslon
- 2 Vol +
- 3 Echo -
- 4 Echo +
- 5 Gumb za povezavo vklop/izklop
- 6 Vol -
- 7 Polnilna vrata
- 8 LED lučka za način
- 9 Gumb za povezavo vklop/izklop
- 10 Priključek 3,5 mm
- 11 Adapter iz 3,5 mm na 6,3 mm

GLAVNE ZNAČILNOSTI

- Usmerjenost: Kardioidna
- SNR: >86 dB
- Frekvenčni odziv: 15 Hz-12 kHz
- Brezžični prenosni doseg: Do 15 m
- Vgrajena baterija: Li-ion 3,7 V, 1500 mAh
- Čas delovanja: Do 30 ur
- Čas polnjenja: Približno 2 uri
- Vhodna moč: 5 V, 650 mA
- Driftfrekvenca: 2402-2480 MHz
- Največja RF izhodna moč: _____
- Dimenzije: Ø48x210 mm
- Teža: 210 g
- Za sprejemnik**
- Vgrajena baterija: 3,7 V, 650 mAh
- Čas delovanja: Do 15 ur
- Čas polnjenja: Približno 2 uri
- Ingangseffekt: 5 V, 500 mA
- Dimenzije: 65,5x13,4x7,8 mm
- Teža: 25 g

SRPSKI

- 1 Prikaz
- 2 Vol +
- 3 Echo -
- 4 Echo +
- 5 Dugme za povezivanje on/off
- 6 Vol -
- 7 Priključak za punjenje
- 8 LED svetlo za način
- 9 Dugme za povezivanje on/off
- 10 3,5 mm priključak
- 11 Adapter od 3,5 mm na 6,3 mm

GLAVNE KARAKTERISTIKE

- Polarni obrazac: Kardioidni
- SNR: >86 dB
- Frekventni opseg: 15 Hz-12 kHz
- Bežični domet prenosa: Do 15 m
- Ugrađena baterija: Li-ion 3,7 V, 1500 mAh
- Vreme reprodukcije: Do 30 sati
- Vreme punjenja: Otprilike 2 sata
- Ulazna snaga: 5 V, 650 mA
- Driftfrekvencija: 2402-2480 MHz
- Maksimalna RF izlazna snaga: _____
- Dimenzije: Ø48x210 mm
- Težina: 210 g
- Za prijemnik**
- Ugrađena baterija: 3,7 V, 650 mAh
- Vreme reprodukcije: Do 15 sati
- Vreme punjenja: Otprilike 2 sata
- Ulazna snaga: 5 V, 500 mA
- Dimenzije: 65,5x13,4x7,8 mm
- Težina: 25 g

NORSK

- 1 Ekran
- 2 Vol +
- 3 Ekko -
- 4 Ekko +
- 5 Av/på-/tilkoblingsknapp
- 6 Vol -
- 7 Ladeport
- 8 LED-modulys
- 9 Av/på-/tilkoblingsknapp
- 10 3,5 mm jack
- 11 Adapter fra 3,5 mm til 6,3 mm

HOVEDFUNKSJONER

- Retningsmønster: Kardioidie
- SNR: >86 dB
- Frekvensrespons: 15 Hz-12 kHz
- Trådløs overføringsrekkevidde: Opptil 15 m
- Innebygget batteri: Li-ion 3,7 V, 1500 mAh
- Spilletid: Opptil 30 timer
- Ladelid: Omtrent 2 timer
- Inngangseffekt: 5 V, 650 mA
- Driftbånd: 2402-2480 MHz
- Maks RF-utgangseffekt: _____
- Dimensjoner: Ø48x210 mm
- Vekt: 210 g
- For mottaker**
- Innebygget batteri: 3,7 V, 650 mAh
- Spilletid: Opptil 15 timer
- Ladelid: Omtrent 2 timer
- Inngangseffekt: 5 V, 500 mA
- Dimensjoner: 65,5x13,4x7,8 mm
- Vekt: 25 g

SUOMI

- 1 Näyttö
- 2 Vol +
- 3 Kaiku -
- 4 Kaiku +
- 5 On/off-yhdistyspainike
- 6 Vol -
- 7 Latausportti
- 8 Tilavalo LED
- 9 On/off-yhdistyspainike
- 10 3,5 mm lititin
- 11 3,5 mm-es csatlakozó 6,3 mm sovlin

TÄRKEIMMÄT OMINAISUDET

- Suuntaavuus: Kardioidi
- SNR: >86 dB
- Taajuusvaste: 15 Hz-12 kHz
- Langaton siirtoteisyys: Jopa 15 m
- Sisäänkennnettu akku: Li-ion 3,7 V, 1500 mAh
- Toistoaika: 30 tuntia
- Latausaika: Noin 2 tuntia
- Syöttöteho: 5 V, 650 mA
- Käyttötaajuus: 2402-2480 MHz
- RF enimmäislähtöteho: _____
- Mitat: Ø48x210 mm
- Paino: 210 g
- Vastaottimelle**
- Sisäänkennnettu akku: 3,7 V, 650 mAh
- Toistoaika: 15 tuntia
- Latausaika: Noin 2 tuntia
- Syöttöteho: 5 V, 500 mA
- Mitat: 65,5x13,4x7,8 mm
- Paino: 25 g

SVENSKA

- 1 Skärm
- 2 Vol +
- 3 Eko -
- 4 Eko +
- 5 På/av-/anslutningsknapp
- 6 Vol -
- 7 Laddningsport
- 8 LED-lampa för läge
- 9 På/av-/anslutningsknapp
- 10 3,5 mm kontakt
- 11 Adapter från 3,5 mm till 6,3 mm

HUVUDSAKLIGA EGENSKAPER

- Polärt mönster: Kardioid
- SNR: >86 dB
- Frekvensrespons: 15 Hz-12 kHz
- Trådlös överföringsräckvidd: Upp till 15 m
- Inbyggd batteri: Li-ion 3,7 V, 1500 mAh
- Speltid: Upp till 30 timmar
- Laddningstid: Cirka 2 timmar
- Ingångseffekt: 5 V, 650 mA
- Driftfrekvens: 2402-2480 MHz
- Max RF-utgångseffekt: _____
- Mått: Ø48x210 mm
- Vikt: 210 g
- För mottagare**
- Inbyggd batteri: 3,7 V, 650 mAh
- Speltid: Upp till 15 timmar
- Laddningstid: Cirka 2 timmar
- Ingångseffekt: 5 V, 500 mA
- Mått: 65,5x13,4x7,8 mm
- Vikt: 25 g

DANSK

- 1 Skærm
- 2 Vol +
- 3 Echo -
- 4 Echo +
- 5 Tænd/sluk-knap til forbindelse
- 6 Vol -
- 7 Opladingsport
- 8 Tilstands-LED-lys
- 9 Tænd/sluk-knap til forbindelse
- 10 3,5 mm jack
- 11 Adapter fra 3,5 mm til 6,3 mm

HOVEDFUNKTIONER

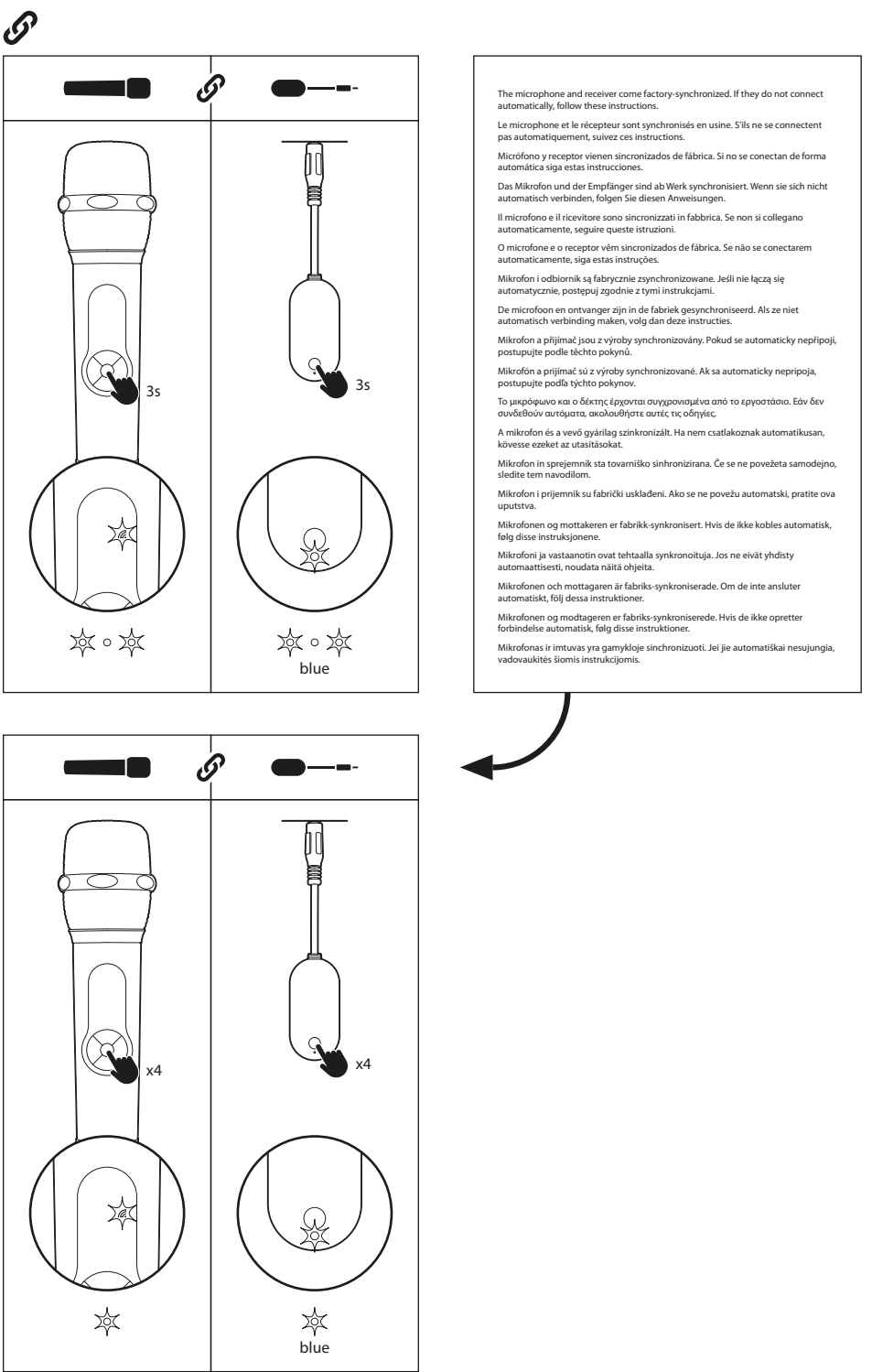
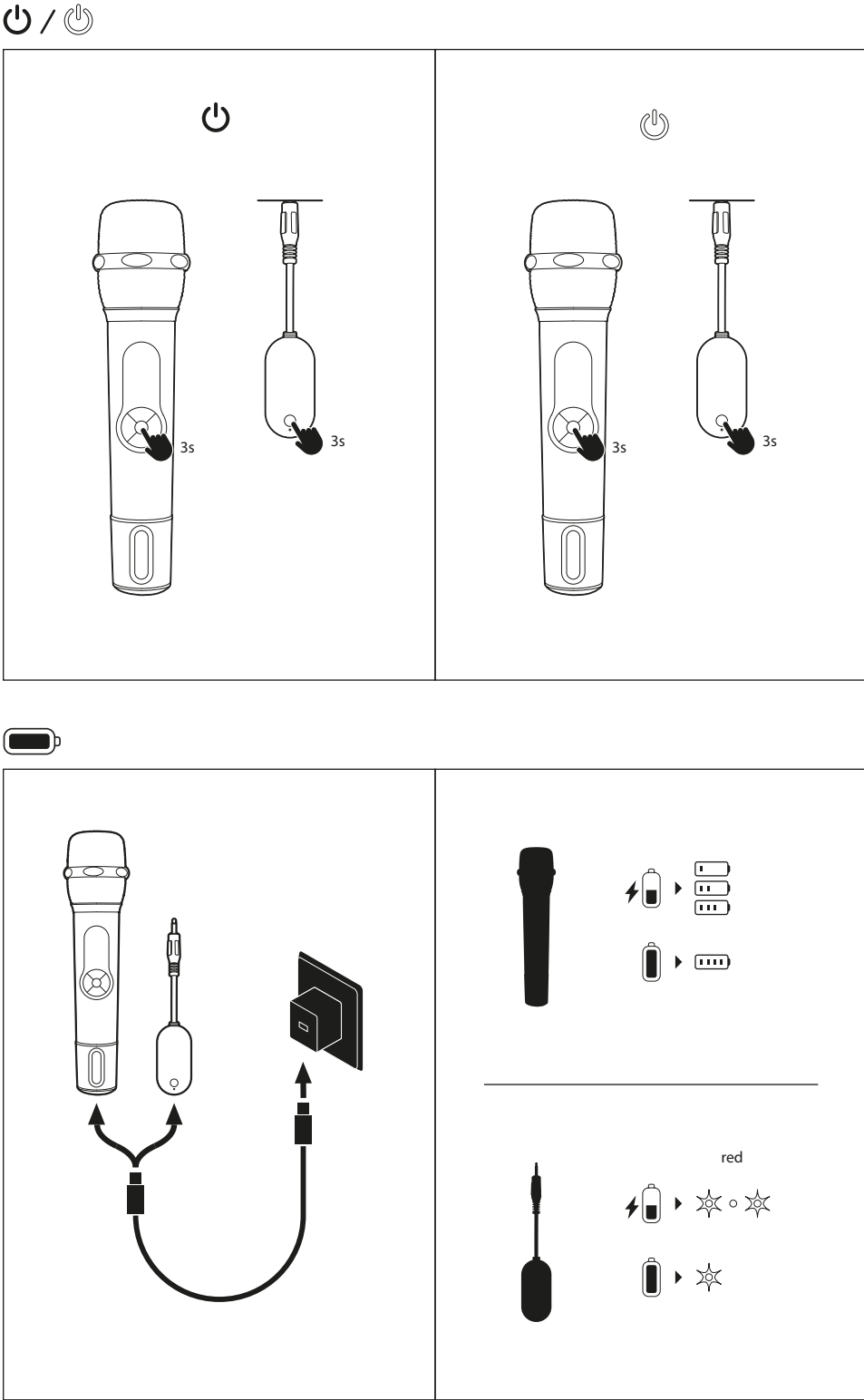
- Retningsmønster: Kardioid
- SNR: >86 dB
- Frekvensrespons: 15 Hz-12 kHz
- Trådløs rækkevidde: Op til 15 m
- Indbygget batteri: Li-ion 3,7 V, 1500 mAh
- Afspilningstid: Op til 30 timer
- Opladningstid: Cirka 2 timer
- Indgangseffekt: 5 V, 650 mA
- Driftsfrekvens: 2402-2480 MHz
- Maksimal RF-udgangseffekt: _____
- Dimensioner: Ø48x210 mm
- Vægt: 210 g
- Til mottager**
- Indbygget batteri: 3,7 V, 650 mAh
- Afspilningstid: Op til 15 timer
- Opladningstid: Cirka 2 timer
- Indgangseffekt: 5 V, 500 mA
- Dimensioner: 65,5x13,4x7,8 mm
- Vægt: 25 g

LIETUVIŲ

- 1 Ekranas
- 2 Vol +
- 3 Aidas -
- 4 Aidas +
- 5 Av/pa-/ijungimo mygtukas jungčiai
- 6 Vol -
- 7 Įkrovimo prievadas
- 8 LED lemputės režimui
- 9 Įjungimo/įjungimo mygtukas jungčiai
- 10 3,5 mm jungtis
- 11 3,5 mm / 6,3 mm adapteris

PAGRINDINIAI CHARAKTERISTIKOS

- Poliarinė diagrama: Kardioidinė
- SNR: >86 dB
- Dažnių diapazonas: 15 Hz-12 kHz
- Belaidžio perdavimo atstumas: Iki 15 m
- Integruota baterija: Li-ion 3,7 V, 1500 mAh
- Veikimo laikas: Iki 30 valandų
- Laidetis: Omtrent 2 valandos
- Įėjimo galia: 5 V, 650 mA
- Darbinis dažnis: 2402-2480 MHz
- Maksimali RF išėjimo galia: _____
- Matmenys: Ø48x210 mm
- Svoris: 210 g
- Intuviai**
- Integruota baterija: 3,7 V, 650 mAh
- Veikimo laikas: Iki 15 valandų
- Įkrovimo laikas: Apytiksliai 2 valandos
- Įėjimo galia: 5 V, 500 mA
- Matmenys: 65,5x13,4x7,8 mm
- Svoris: 25 g



SECURITY

IMPORTANT SAFETY INSTRUCTIONS

For all products:

1. Read and follow the instructions.
2. Keep the instructions in a safe place.
3. Observe the warnings.
4. Do not block the ventilation openings. Install according to the instructions.
5. Do not install near any heat sources such as radiators, heating vents, stoves, or other appliances (including amplifiers that generate heat).
6. Avoid stepping on or pinching the power cord, especially at plug, outlets, and the point where it exits the product.
7. Use only the accessories and auxiliary products specified in the product.
8. Take care when transporting the product to prevent damage.
9. Unplug the device during thunderstorms or when not in use for an extended period.
10. The power cable supplied for the device must remain ready for reuse.
11. Do not expose batteries to excessive heat such as direct sunlight or fire, as well as moisture in the area where you intend to use the device.
12. This device is intended for use only with the power supply and/or charging cable provided by the manufacturer.

CAUTION

- RISK OF ELECTRIC SHOCK. DO NOT OPEN**
The symbol refers to "dangerous voltage" inside the product's cabinet that, when misused and disassembled, may result in electric shock to people.
- WARNING**
The symbol refers to "important instructions" for operation and maintenance (repairs).

WARNING:

- The manufacturer disclaims all responsibility for damage or deterioration caused by unauthorized modifications.
- WEEE Notice** The Waste Electrical and Electronic Equipment (WEEE) Directive, which came into force in Europe under the European Parliament and the Council of June 4, 2012, on the restriction of the use of certain hazardous substances in electrical and electronic equipment.

This product should not be disposed of with household waste. It is your responsibility to properly dispose of all waste from your electrical equipment, and for this purpose, you must take them to the designated collection point for the recycling of such hazardous waste. The separate collection and proper recovery of waste from your electrical and electronic equipment at the time of disposal allow us to help preserve natural resources and ensure the safety of human health and the environment. For more information on disposal, recovery, and collection points for electrical and electronic equipment waste, please contact your local city center, domestic waste disposal service, the store where you purchased the equipment, or the equipment manufacturer.

This product complies with Directive 2011/65/EU and its amendment (EU) 2015/863 of the European Parliament and the Council of June 4, 2015, on the restriction of the use of certain hazardous substances in electrical and electronic equipment.

For products that include batteries:
EU Directive 2013/56/EU on batteries and accumulators, which replaces the previous directive, came into force on 01/07/2013. The directive applies to all types of batteries and accumulators (AA, AAA, button cells, lead acid, including those incorporated into toys and equipment for use in military, medical, and power tool applications. The directive sets standards for the collection, treatment, recycling, and disposal of batteries and aims to prohibit certain hazardous substances and improve the environmental performance of batteries and all operators in the supply chain.

Use instructions for extraction, recycling, and disposal of used batteries.
To remove the batteries from the equipment or remote control, reverse the battery insertion process described in the user's manual.
In the case of products with built-in batteries (like the entire product), it is not possible for the user to remove the batteries. In such cases, recovery centers handle the dismantling of the product and the extraction of the batteries. If, for any reason, it is necessary to replace one of the batteries, the procedure must be carried out at an authorized service center.

In the European Union and other locations, it is prohibited to dispose of batteries with household waste. All batteries must be disposed of in an environmentally friendly manner. Please contact local waste management officials for information on disposal.

WARNING: Risk of explosion if the battery is replaced incorrectly. To reduce the risk of fire, burns, or disassembly, crush, puncture, short circuit external contacts, expose to temperatures above 60°C (140°F), or dispose of in fire or water. Replace only with specified batteries.

